

# INSTRUCTIONS



## PUSHRF24VDC

4 Channels/Push Dim/Wireless remote control/Auto-transmitting/Synchronize/Wall junction box mounting

### Features

- RF + Push LED controller, 4 channel constant voltage output.
- Set as single color, dual color, RGB or RGBW controller by DIP switch.
- Match with 2.4G single color, dual color and RGB/RGBW remote control.
- One RF controller accept up to 10 remote control.
- 4096 levels 0-100% dimming smoothly without any flash.
- When using with RGB/RGBW light, built in 10 dynamic mode, include jump or gradual change style.
- Auto-transmitting function: Controller automatically transmit signal to another controller with 30m control distance.
- Synchronize on multiple number of controllers.
- Connect with external push switch to achieve on/off and 0-100% dimming function.
- Easy to be placed in standard wall junction box behind a push switch.



FC CE RoHS EMC LVD RED

### Technical Parameters

| Input and Output |                  |
|------------------|------------------|
| Input voltage    | 12-24VDC         |
| Input current    | 12.5A            |
| Output voltage   | 4 x (12-24)VDC   |
| Output current   | 4CH, 3A/CH       |
| Output power     | 4 x (36-72)W     |
| Output type      | Constant voltage |

| Dimming data       |                         |
|--------------------|-------------------------|
| Input signal       | RF 2.4GHz + Push Dim    |
| Control distance   | 30m(Barrier-free space) |
| Dimming gray scale | 4096 (2^12) levels      |
| Dimming range      | 0-100%                  |
| Dimming curve      | Logarithmic             |

| Safety and EMC        |                     |
|-----------------------|---------------------|
| EMC standard (EMC)    | EN301 489, EN 62479 |
| Safety standard (LVD) | EN60950             |
| Radio Equipment (RED) | EN300 328           |
| Certification         | CE, EMC, LVD, RED   |

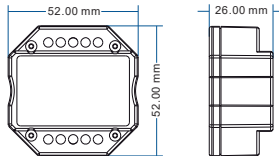
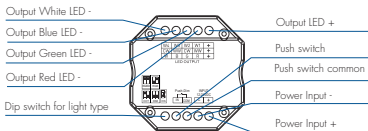
  

| Environment             |                   |
|-------------------------|-------------------|
| Operation temperature   | Ta: -30°C ~ +55°C |
| Case temperature (Max.) | Tc: +85°C         |
| IP rating               | IP20              |

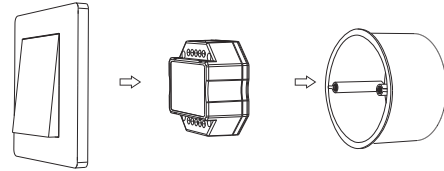
  

| Protection |                  |
|------------|------------------|
| Protection | Reverse Polarity |

### Mechanical Structures and Installations

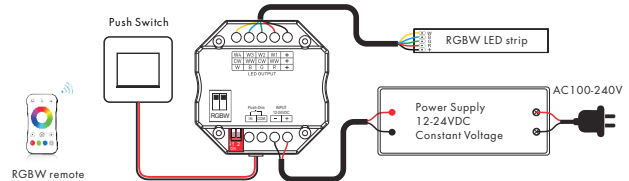


### Typical Wall Junction Box Mounting

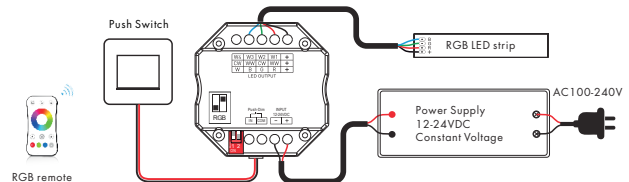


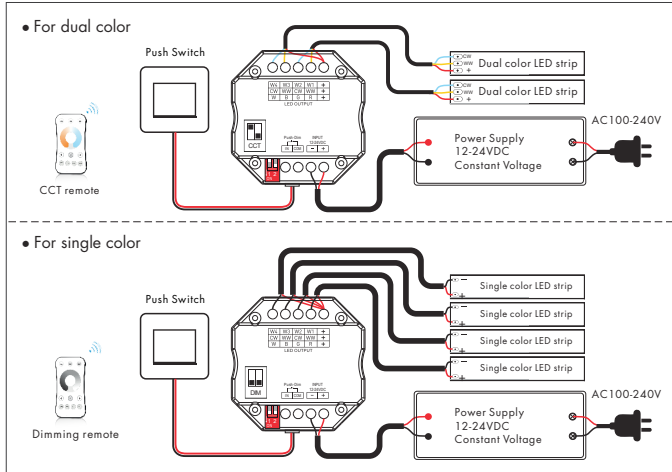
### Wiring Diagram

#### • For RGBW



#### • For RGB





## Push Dim

|              |                           |  |
|--------------|---------------------------|--|
| Single color | Click                     | ON/OFF   |
|              | Double Click              | Turn on at 100% or 10%( night light) and vice-versa  |
|              | Long press(> 1s) from OFF | Dimming UP/DOWN  |
|              | Long press(> 1s) from ON  | Dimming UP/DOWN  |
| Dual Color   | Click                     | ON/OFF   |
|              | Double Click              | Turn on at 100% or 10%( night light) and vice-versa  |
|              | Long press(> 1s) from OFF | Color temperature UP/DOWN (turn off and turn on to return dimming)                                 |
|              | Long press(> 1s) from ON  | Dimming UP/DOWN  |
| RGB          | Click                     | ON/OFF   |
|              | Double Click              | Change from color mode to white mode (RGB mixed) and vice-versa                                    |
|              | Long press(> 1s) from OFF | If on color mode change rotation speed;<br>If on white mode dimming UP/DOWN                        |
|              | Long press(> 1s) from ON  | If on color mode start/stop color rotation;<br>If on white mode dimming UP/DOWN                    |
| RGBW         | Click                     | ON/OFF   |
|              | Double Click              | Change between color mode, white mode (W channel) and color+W mode                                 |
|              | Long press(> 1s) from OFF | If on color mode change rotation speed;<br>If on white mode or color+W mode, W dimming UP/DOWN     |
|              | Long press(> 1s) from ON  | If on color mode start/stop color rotation;<br>If on white mode or color+W mode, W dimming UP/DOWN |

Color rotation:

We can select 4 rotation speed:

10 flash/s means 6 seconds color rotation, 5 flash/s means 30 seconds color rotation,  
2 flash/s means 1 minute color rotation, 1 flash/s means 6 minutes color rotation.

## Match Remote Control (two match ways)

End user can choose the suitable match/delete ways. Two options are offered for selection:

### Use the controller's DIP switch

Match:

Change DIP switch setting, immediately short press zone key of the remote.

### Use Power Restart

Match:

Switch off the power, then switch on power again, immediately short press zone key 3 times on the remote.

The light blinks 3 times means match is successful.

Delete:

Switch off the power, then switch on power again, immediately short press zone key (multiple zone remote) 5 times on the remote.

The light blinks 5 times means all matched remotes were deleted.

## RGB/RGBW dynamic mode list

| No. | Name                      | No. | Name                  |
|-----|---------------------------|-----|-----------------------|
| 1   | RGB jump                  | 6   | RGB fade in and out   |
| 2   | RGB smooth                | 7   | Red fade in and out   |
| 3   | 6 color jump              | 8   | Green fade in and out |
| 4   | 6 color smooth            | 9   | Blue fade in and out  |
| 5   | Yellow cyan purple smooth | 10  | White fade in and out |

## Dual color control

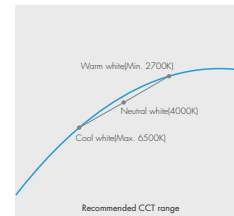
CH1 ,CH3=Warm white LED

CH2 ,CH4=Cool white LED

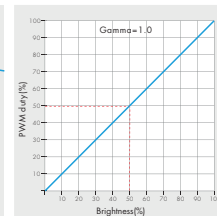
Each channel can supply up to 72W(@24V) and white balance can be controlled as such:

| Color temperature  | Cool white                       | Neutral white                      | Warm white                       |
|--------------------|----------------------------------|------------------------------------|----------------------------------|
| Power distribution | CH1=0W,CH2=72W<br>CH3=0W,CH4=72W | CH1=36W,CH2=36W<br>CH3=36W,CH4=36W | CH1=72W,CH2=0W<br>CH3=72W,CH4=0W |

Linear dual color tuning



Dimming curve for CCT



Dimming curve for RGBW/RGB/DIM

