

INSTRUCTIONS



PUSHRF24VDC

4 Channels/Push Dim/Wireless remote control/Auto-transmitting/Synchronize/Wall junction box mounting

Features

- RF + Push LED controller, 4 channel constant voltage output.
- Set as single color, dual color, RGB or RGBW controller by DIP switch.
- Match with 2.4G single color, dual color and RGB/RGBW remote control.
- One RF controller accept up to 10 remote control.
- 4096 levels 0-100% dimming smoothly without any flash.
- When using with RGB/RGBW light, built in 10 dynamic mode, include jump or gradual change style.
- Auto-transmitting function: Controller automatically transmit signal to another controller with 30m control distance.
- Synchronize on multiple number of controllers.
- Connect with external push switch to achieve on/off and 0-100% dimming function.
- Easy to be placed in standard wall junction box behind a push switch.



FC CE RoHS EMC LVD RED

Technical Parameters

Input and Output	
Input voltage	12-24VDC
Input current	12.5A
Output voltage	4 x {12-24}VDC
Output current	4CH, 3A/CH
Output power	4 x {36-72}W
Output type	Constant voltage

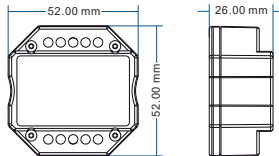
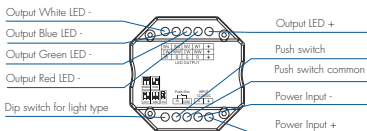
Safety and EMC	
EMC standard (EMC)	EN301 489, EN 62479
Safety standard (LVD)	EN60950
Radio Equipment (RED)	EN300 328
Certification	CE, EMC, LVD, RED

Environment	
Operation temperature	Ta: -30°C ~ +55°C
Case temperature (Max.)	Tc: +85°C
IP rating	IP20

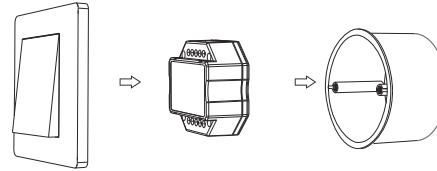
Protection	
Protection	Reverse Polarity

Dimming data	
Input signal	RF 2.4GHz + Push Dim
Control distance	30m (Barrier-free space)
Dimming gray scale	4096 (2^12) levels
Dimming range	0-100%
Dimming curve	Logarithmic

Mechanical Structures and Installations

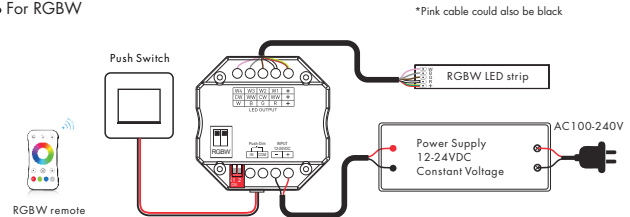


Typical Wall Junction Box Mounting

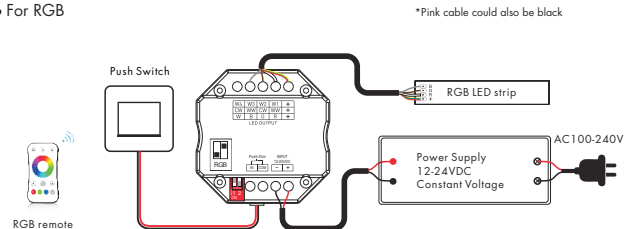


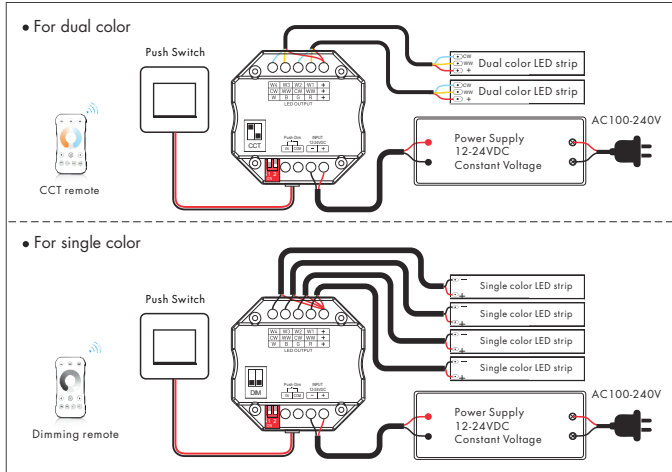
Wiring Diagram

• For RGBW



• For RGB





Push Dim

Single color	Click	ON/OFF
	Double Click	Turn on at 100% or 10%(night light) and vice-versa
	Long press(> 1s) from OFF	Dimming UP/DOWN
	Long press(> 1s) from ON	Dimming UP/DOWN
Dual Color	Click	ON/OFF
	Double Click	Turn on at 100% or 10%(night light) and vice-versa
	Long press(> 1s) from OFF	Color temperature UP/DOWN (turn off and turn on to return dimming)
	Long press(> 1s) from ON	Dimming UP/DOWN
RGB	Click	ON/OFF
	Double Click	Change from color mode to white mode (RGB mixed) and vice-versa
	Long press(> 1s) from OFF	If on color mode change rotation speed; If on white mode dimming UP/DOWN
	Long press(> 1s) from ON	If on color mode start/stop color rotation; If on white mode dimming UP/DOWN
RGBW	Click	ON/OFF
	Double Click	Change between color mode, white mode (W channel) and color+W mode
	Long press(> 1s) from OFF	If on color mode change rotation speed; If on white mode or color+W mode, W dimming UP/DOWN
	Long press(> 1s) from ON	If on color mode start/stop color rotation; If on white mode or color+W mode, W dimming UP/DOWN

Color rotation:

We can select 4 rotation speed:

10 flash/s means 6 seconds color rotation, 5 flash/s means 30 seconds color rotation,
2 flash/s means 1 minute color rotation, 1 flash/s means 6 minutes color rotation.

Match Remote Control (two match ways)

End user can choose the suitable match/delete ways. Two options are offered for selection:

Use the controller's DIP switch

Match:

Change DIP switch setting, immediately short press zone key of the remote.

Use Power Restart

Match:

Switch off the power, then switch on power again, immediately short press zone key 3 times on the remote.

The light blinks 3 times means match is successful.

Delete:

Switch off the power, then switch on power again, immediately short press zone key (multiple zone remote) 5 times on the remote.

The light blinks 5 times means all matched remotes were deleted.

RGB/RGBW dynamic mode list

No.	Name	No.	Name
1	RGB jump	6	RGB fade in and out
2	RGB smooth	7	Red fade in and out
3	6 color jump	8	Green fade in and out
4	6 color smooth	9	Blue fade in and out
5	Yellow cyan purple smooth	10	White fade in and out

Dual color control

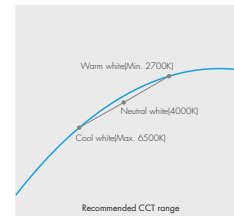
CH1 ,CH3=Warm white LED

CH2 ,CH4=Cool white LED

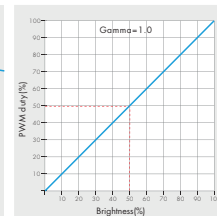
Each channel can supply up to 72W(@24V) and white balance can be controlled as such:

Color temperature	Cool white	Neutral white	Warm white
Power distribution	CH1=0W,CH2=72W CH3=0W,CH4=72W	CH1=36W,CH2=36W CH3=36W,CH4=36W	CH1=72W,CH2=0W CH3=72W,CH4=0W

Linear dual color tuning



Dimming curve for CCT



Dimming curve for RGBW/RGB/DIM

