



SC4ZPAN
TW4ZPAN
RGBW4ZPAN
Touchscreen panels



SC4ZPAN



TW4ZPAN



RGBW4ZPAN

CE RoHS LVD RED

Features

- Touch panel 4 zone 1-4 color DMX512 master, can also be used as 4 zone 1-4 color RF remote.
- DMX signal output, comply to standard DMX512 protocol, compatible with DMX decoder from any supplier.
- When used as RF remote, each zone can remote control multiple Skydance's 2.4G LED controllers.
- Ultra sensitive high strength glass touch panel with touch color wheel in the middle.
- Smooth and accurate color adjustment by touching the color wheel.
- Touch keys with chord tones and LED indicator.
- White & Black glass panel available.

Technical Parameters

Model No.	SC4ZPAN	TW4ZPAN	RGBW4ZPAN
Light type	Single color	Dual color	RGBW
Output DMX channel number	4	8	16

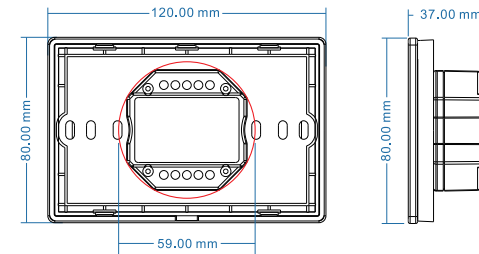
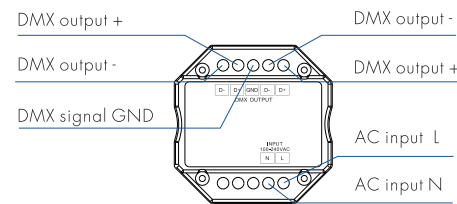
Input and Output	
Input voltage	100-240VAC
Input current	Max 0.1A
Output signal	DMX512, RF 2.4GHz

Safety and EMC	
EMC standard (EMC)	ETSI EN 301 489-1 V2.2.3 ETSI EN 301 489-17 V3.2.4
Safety standard(LVD)	EN 62368-1:2020+A11:2020
Radio Equipment(RED)	ETSI EN 300 328 V2.2.2
Certification	CE,EMC,LVD,RED

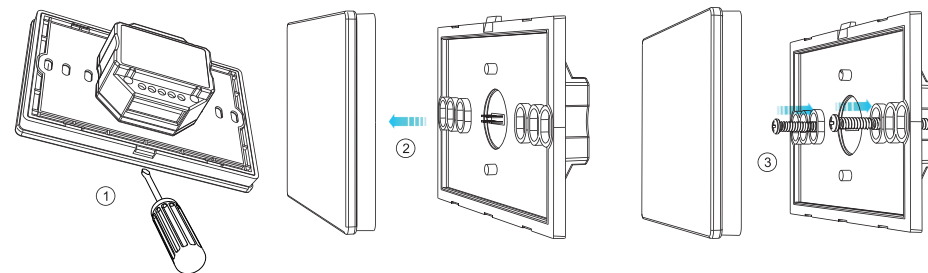
Dimming data	
Input signal	Touch key + RF 2.4GHz
RF Control distance	10m(Barrier-free space)
Dimming level	256 levels
Dimming range	0-100%

Environment	
Operation temperature	Ta: -30°C ~ +55°C
Case temperature (Max.)	Tc: +65°C
IP rating	IP20

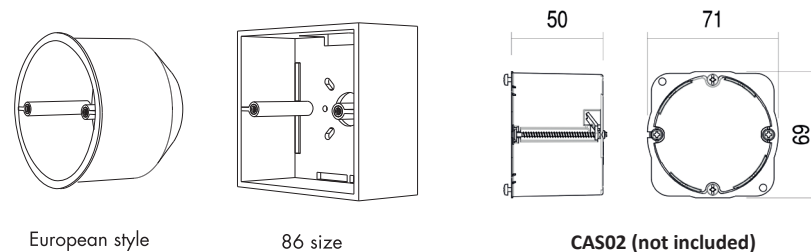
Mechanical Structures and Installations



Installation diagram:

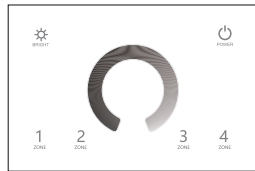


Typical base as below:



Key function

SC4ZPAN Single color panel

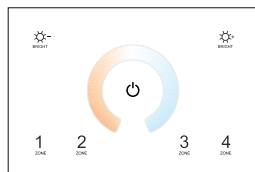


- Turn on/off all zone light.
- Brightness, 10 levels.
- Brightness wheel.

1 2 3 4
ZONE ZONE ZONE ZONE

Short press turn on zone light and select zone simultaneously, long press 2s turn off zone light.
4 zone control separately or synchronously, each zone could control multiple receivers.

TW4ZPAN Dual color panel

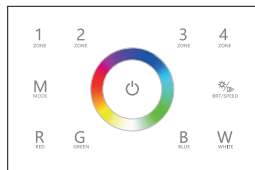


- Turn on/off all zone light.
- Brightness +, 10 levels.
- Brightness -, 10 levels.
- Color temperature wheel.

1 2 3 4
ZONE ZONE ZONE ZONE

Short press turn on zone light and select zone simultaneously, long press 2s turn off zone light.
4 zone control separately or synchronously, each zone could control multiple receivers.

RGBW4ZPAN RGBW panel



- Turn on/off all zone light.
- Color wheel.
- Short press play 10 built-in dynamic mode, long press 2s run mode-cycle.
- Adjust dynamic mode speed or static color brightness, 10 levels.
- Short press get red, green, blue, white color, long press adjust each color brightness.

1 2 3 4
ZONE ZONE ZONE ZONE

Short press turn on zone light and select zone simultaneously, long press 2s turn off zone light.
4 zone control separately or synchronously, each zone could control multiple receivers.

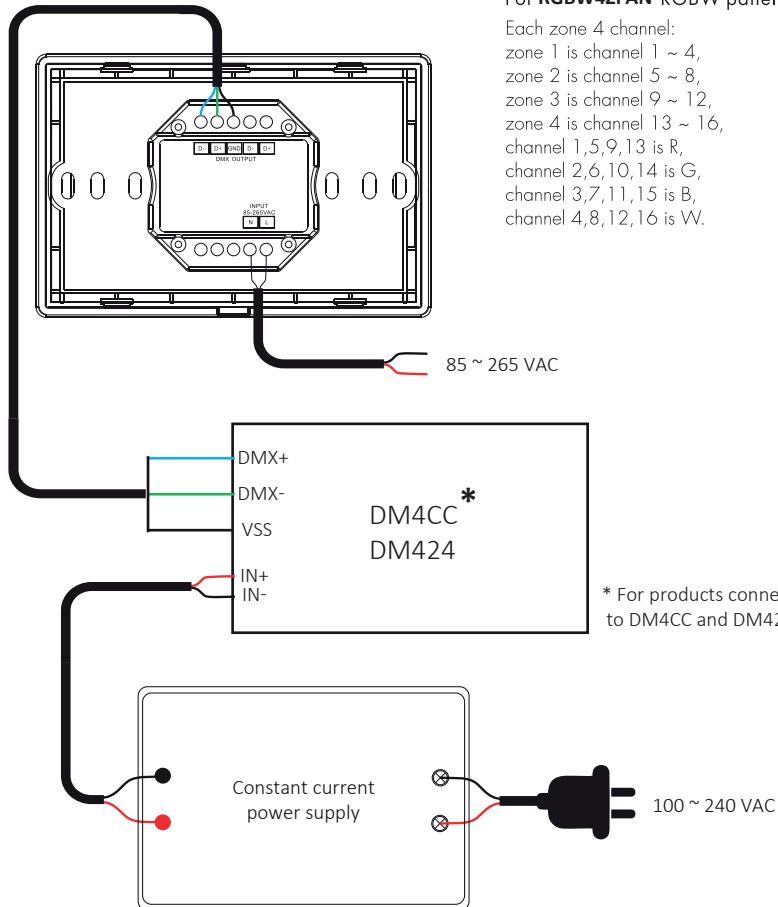
Note: After touch power key to turn off light, long press power key for 5 seconds will turn on or turn off tone.

Touch Panel work as DMX512 Master

After connect with DMX decoders, please set the DMX decoders address as below:

Model No.	SC4ZPAN	TW4ZPAN		RGBW4ZPAN			
		WW	CW	R	G	B	W
Zone 1 DMX decoder's address	1	1	2	1	2	3	4
Zone 2 DMX decoder's address	2	3	4	5	6	7	8
Zone 3 DMX decoder's address	3	5	6	9	10	11	12
Zone 4 DMX decoder's address	4	7	8	13	14	15	16

Wiring Diagram for touch panel work as DMX512 master



Touch Panel work as RF remote with controllers PUSHRF24VDC / PUSHRF350MA / PUSHRF700MA

Touch panel 4 zone remote can match with RF controller for the corresponding light type.
End user can choose the suitable match/delete ways. Two options are offered for selection:

Use the controller's Match key

Match:

Short press match key, immediately press zone key of the touch panel.

The LED indicator fast flash a few times means match is successful.

Delete:

Press and hold match key for 5s to delete all match,

The LED indicator fast flash a few times

means all matched remotes were deleted.

Use Power Restart

Match:

Switch off the power of the receiver, then switch on power, repeat again.

Immediately short press zone key 3 times on the touch panel.

The light blinks 3 times means match is successful.

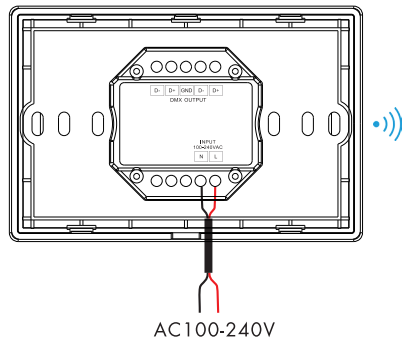
Delete:

Switch off the power of the receiver, then switch on power, repeat again.

Immediately short press zone key 5 times on the touch panel.

The light blinks 5 times means all matched remotes were deleted.

Wiring Diagram for touch panel work as RF remote
with controllers PUSHRF24VDC / PUSHRF350MA / PUSHRF700MA



RGB/RGBW dynamic mode list (only for **RGBW4ZPAN**)

No.	Name	No.	Name
1	RGB jump	6	RGB fade in and out
2	RGB smooth	7	Red fade in and out
3	6 color jump	8	Green fade in and out
4	6 color smooth	9	Blue fade in and out
5	Yellow cyan purple smooth	10	White fade in and out

Malfunctions analysis & troubleshooting

Malfunctions	Causes	Troubleshooting
No light	<ol style="list-style-type: none"> No power. Wrong connection or insecure. 	<ol style="list-style-type: none"> Check the power. Check the connection.
Wrong color	<ol style="list-style-type: none"> DMX decoder first address error. Wrong connection of output wires. 	<ol style="list-style-type: none"> Check the DMX first address. Reconnect output wires.