

NEW

AURA STEPLIGHT

IP65 IK08 CE F III WP 

TIPOLOGIA / TYPOLOGY

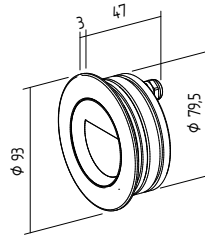
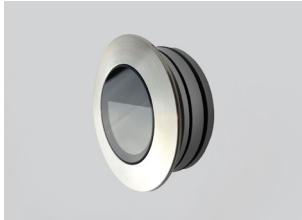
Segnapasso | Steplight

POSIZIONE INSTALLATIVA | INSTALLATION POSITION

A parete | Wall mounting




AMBIENTE INSTALLATIVO | INSTALLATION LOCATION

Esterno o Interno | Outdoor or Indoor



AURA STEPLIGHT

6W

	Finish .01 .02 .08 .09 .17 .19 .52		81 mm
	Finish .06 .10		
	kg 0,39		
	kg 0,51		

CARATTERISTICHE ELETTRICHE | ELECTRICAL FEATURES

POTENZA ASSORBITA POWER CONSUMPTION	6W
ALIMENTAZIONE POWER SUPPLY	24Vdc
ALIMENTATORE POWER SUPPLY UNIT	24Vdc - Non incluso Not included
DIMMERAZIONE DIMMING	Dimmerabile Push, DMX, DALI, 1-10V, taglio di fase Push, DMX, DALI, 1-10V, phase cut dimmable
COLLEGAMENTO CONNECTION	Parallelo Parallel

CARATTERISTICHE ILLUMINOTECNICHE | LIGHTING FEATURES

COLORE LED LED COLOUR	2700K, 3000K, 4000K, 5000K, Red, Green, Blue
INDICE RESA CROMATICA CRI CRI	>90 (2700K, 3000K, 4000K, 5000K)
OTTICHE OPTICS	ASYM
UGR	<19
FLUSSO TOTALE NOMINALE TOTAL NOMINAL LUMENS	560lm (2700K) 600lm (3000K) 640lm (4000K)
DURATA MEDIA LED AVERAGE LED LIFE	50.000h L80 B10

CARATTERISTICHE MECCANICHE | MECHANICAL FEATURES

PESO WEIGHT	Finish .01 .02 .08 .09 .17 .19 .52: kg 0,39 Finish .06 .10: kg 0,51
FINITURE FINISHES	Alluminio anodizzato, Bianco txt, Acciaio, Nero txt, Corten, Acciaio spazzolato, Antracite txt, Sand, Bronzo anodico opaco anodized aluminium, txt white, steel, txt black, corten, brushed steel, txt anthracite, sand, anodized bronze matt
INSTALLAZIONE INSTALLATION	A incasso su cartongesso o legno tramite molla (non inclusa) Recessed on plasterboard or wood with spring (not included) A muratura per interferenza tramite o-ring (inclusi) e cassaforma (non inclusa) Recessed on brickwork through o-ring (included) and housing box (not included)
MATERIALE MATERIAL	Corpo in alluminio anticorodal anodizzato, ghiera in alluminio anticorodal anodizzato o verniciato (versione alluminio), ghiera in acciaio inox AISI 316L (versione inox), vetro temperato serigrafato Anticorodal anodized aluminium body, anodized or varnished anticorodal aluminium trim (aluminium version), AISI 316L stainless steel trim (inox version), printed glass and PMMA lens


CARATTERISTICHE GENERALI | GENERAL FEATURES

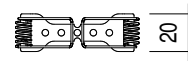
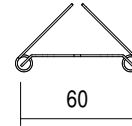
TEMPERATURA DI ESERCIZIO OPERATING TEMPERATURE	-10°C +45°C
GRADO DI PROTEZIONE INGRESS PROTECTION	IP65
GRADO DI RESISTENZA IMPACT RESISTANCE	IK08
GLOW WIRE TEST GLOW WIRE TEST	960°C
TEMPERATURA SCHERMO SCREEN TEMPERATURE	40° @ Ta = 25°
CLASSE DI ISOLAMENTO APPLIANCE CLASS	III
CALPESTABILE WALKOVER	/
CARRABILE DRIVE OVER	/
CAVI DI ALIMENTAZIONE POWER CABLES	Fornito con 50 cm di cavo Provided with 50 cm cable
SICUREZZA STANDARD STANDARD SAFETY	WP System
SICUREZZA FOTOBIOLOGICA PHOTOBIOLOGICAL SAFETY	GR1


NEW

AURA STEPLIGHT

ACCESSORI | ACCESSORIES

CODICE / CODE	ML060
TIPOLOGIA / TYPOLOGY	Molla di torsione <i>Torsion spring</i>  kg 0,002
MATERIALE / MATERIAL	Acciaio armonico <i>Harmonic steel</i>



CODICE / CODE	CA081
TIPOLOGIA / TYPOLOGY	Cassaforma Housing box  kg 0,10
MATERIALE / MATERIAL	PVC

