

IP40 IK06 CE

TIPOLOGIA / TYPOLOGY

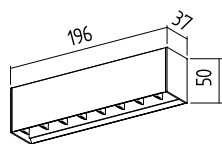
Profilo | Profile

POSIZIONE INSTALLATIVA | INSTALLATION POSITION

A soffitto | Ceiling mounting

AMBIENTE INSTALLATIVO | INSTALLATION LOCATION

Interno | Interno



NYX M

196 mm

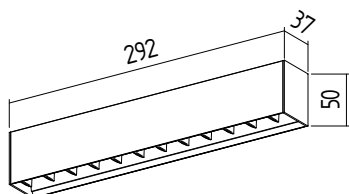
8W



kg 0,33



42 x 202 mm



NYX L

291 mm

12W



kg 0,47



42 x 297 mm

CARATTERISTICHE ELETTRICHE | ELECTRICAL FEATURES

POTENZA ASSORBITA POWER CONSUMPTION	M version: 8W - L version: 12W
ALIMENTAZIONE POWER SUPPLY	C.C.
ALIMENTATORE POWER SUPPLY UNIT	350mA non incluso <i>not included</i>
DIMMERAZIONE DIMMING	Dimmerabile Push, DMX, DALI, 1-10V, taglio di fase <i>Push, DMX, DALI, 1-10V, phase cut dimmable</i>
COLLEGAMENTO CONNECTION	Serie <i>Series</i>

CARATTERISTICHE ILLUMINOTECNICHE | LIGHTING FEATURES

COLORE LED LED COLOUR	2700K, 3000K, 4000K, 5000K, Red, Green, Blue
INDICE RESA CROMATICA CRI CRI	>90 (2700K, 3000K, 4000K, 5000K)
OTTICHE OPTICS	12°, 30°, 55°
UGR	<16
FLUSSO TOTALE NOMINALE TOTAL NOMINAL LUMENS	M version: 864lm (2700K) 920lm (3000K) 1024lm (4000K) Lversion: 1296lm (2700K) 1380lm (3000K) 1536lm (4000K)
DURATA MEDIA LED AVERAGE LED LIFE	50.000h L80 B10

CARATTERISTICHE MECCANICHE | MECHANICAL FEATURES

PESO WEIGHT	M version: kg 0,33 - L version: kg 0,47
FINITURE FINISHES	Bianco txt, Nero txt <i>txt White, txt Black</i>
INSTALLAZIONE INSTALLATION	A incasso su cartongesso o legno con cassaforma a rasare (non inclusa), a plafone tramite molle (incluse) <i>Recessed flush-mounting on plasterboard or wood with housing box (not included), ceiling mounting with springs (included)</i>
MATERIALE MATERIAL	Corpo in alluminio estruso verniciato, lenti in PMMA e schermo anti-abbagliamento in policarbonato nero <i>Varnished extruded aluminium body, PMMA lenses with anti-glare shade in black polycarbonate</i>


CARATTERISTICHE GENERALI | GENERAL FEATURES

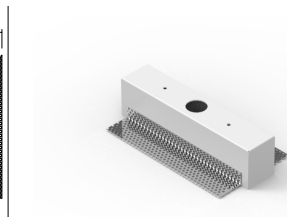
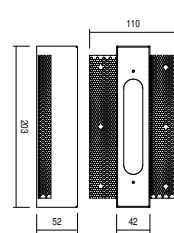
TEMPERATURA DI ESERCIZIO OPERATING TEMPERATURE	-10°C +45°C
GRADO DI PROTEZIONE INGRESS PROTECTION	IP40
GRADO DI RESISTENZA IMPACT RESISTANCE	IK06
GLOW WIRE TEST GLOW WIRE TEST	960°C.
TEMPERATURA SCHERMO SCREEN TEMPERATURE	40°C @ Ta = 25°C
CLASSE DI ISOLAMENTO APPLIANCE CLASS	III
CALPESTABILE WALKOVER	/
CARRABILE DRIVE OVER	/
CAVI DI ALIMENTAZIONE POWER CABLES	Fornito con 25 cm di cavo <i>Provided with 25 cm cable</i>
SICUREZZA STANDARD STANDARD SAFETY	/
SICUREZZA FOTOBIOLOGICA PHOTOBIOLOGICAL SAFETY	GR1




NYX

ACCESSORI | ACCESSORIES

M version	CODICE / CODE	CAN20
	TIPOLOGIA / TYPOLOGY	Cassaforma Housing box  kg 0,37
	MATERIALE / MATERIAL	Acciaio Steel



L version	CODICE / CODE	CAN30
	TIPOLOGIA / TYPOLOGY	Cassaforma Housing box  kg 0,52
	MATERIALE / MATERIAL	Acciaio Steel

