

IP40 IK06 CE 

TIPOLOGIA / *TPOLOGY*

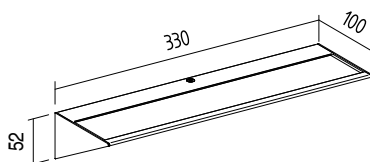
Applique

POSIZIONE INSTALLATIVA | *INSTALLATION POSITION*


A parete | *Wall mounting*

AMBIENTE INSTALLATIVO | *INSTALLATION LOCATION*

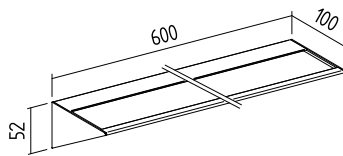
Interno | *Indoor*



PAN S
16W

 330 mm

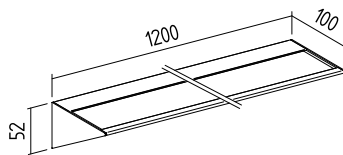
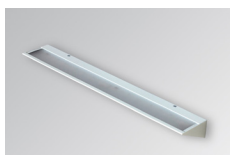
 kg 0,9



PAN M
32W

 600 mm

 kg 1,4



PAN L
45W

 1200 mm

 kg 2,53

CARATTERISTICHE ELETTRICHE | ELECTRICAL FEATURES

POTENZA ASSORBITA | POWER CONSUMPTION S version: **16W** | M version: **32W** | L version: **45W**

ALIMENTAZIONE | POWER SUPPLY **230Vac**

ALIMENTATORE | POWER SUPPLY UNIT **Integrato | Integrated**

DIMMERAZIONE | DIMMING **Dimmerabile Push, DALI, 1-10V | Push, DALI, 1-10V dimmable**

COLLEGAMENTO | CONNECTION **Tensione di rete | Mains voltage**

CARATTERISTICHE ILLUMINOTECNICHE | LIGHTING FEATURES

COLORE LED | LED COLOUR 2700 K, 3000 K, 4000 K

INDICE RESA CROMATICA CRI | CRI **>90**

OTTICHE | OPTICS **Indiretta | Indirect**

FLUSSO TOTALE NOMINALE TOTAL NOMINAL LUMENS	S: 1930lm (2700K)	2030lm (3000K)	2155lm (4000K)
	M: 3860lm (2700K)	4060lm (3000K)	4310lm (4000K)
	L: 5460lm (2700K)	5740lm (3000K)	6100m (4000K)

DURATA MEDIA LED | AVERAGE LED LIFE **50.000h L80 B10**

CARATTERISTICHE MECCANICHE | MECHANICAL FEATURES

PESO | WEIGHT S version: **kg 0,9** | M version: **kg 1,4** | L version: **kg 2,53**

FINITURE | FINISHES **Bianco txt, Nero txt, Corten**
txt White, txt Black, Corten

INSTALLAZIONE | INSTALLATION **A parete con staffa inclusa**
Wall mounting with included bracket

MATERIALE | MATERIAL **Corpo in alluminio estruso, schermo in metacrilato opalino**
Extruded aluminium body, opal methacrylate screen

CARATTERISTICHE GENERALI | GENERAL FEATURES

TEMPERATURA DI ESERCIZIO
OPERATING TEMPERATURE **-10°C +45°C**

GRADO DI PROTEZIONE | INGRESS PROTECTION **IP40**

GRADO DI RESISTENZA | IMPACT RESISTANCE **IK06**

GLOW WIRE TEST | GLOW WIRE TEST **960°C**

TEMPERATURA SCHERMO
SCREEN TEMPERATURE **40° @ Ta = 25°**

CLASSE DI ISOLAMENTO | APPLIANCE CLASS **I**

CALPESTABILE | WALKOVER **/**

CARRABILE | DRIVE OVER **/**

CAVI DI ALIMENTAZIONE | POWER CABLES **Fornito con morsettiera | Provided with terminal block**

SICUREZZA STANDARD | STANDARD SAFETY **/**

SICUREZZA FOTOBIOLOGICA
PHOTOBIOLOGICAL SAFETY **GR1**