



IP65 IK07  

TIPOLOGIA / TYPOLOGY

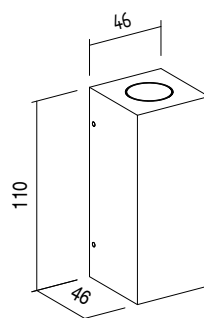

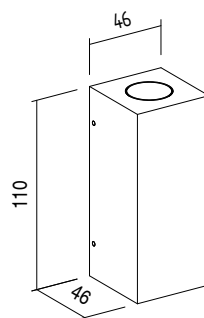
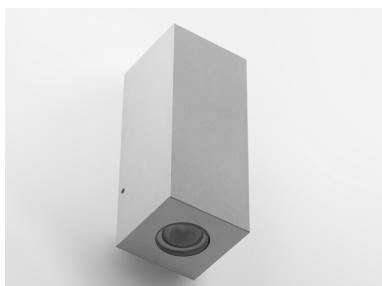

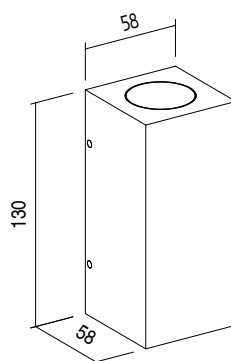
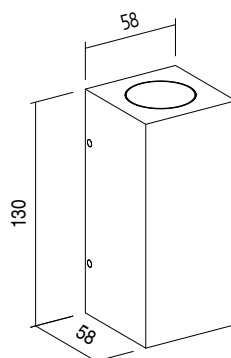

Applique

POSIZIONE INSTALLATIVA / INSTALLATION POSITION

A parete | Wall mounting

AMBIENTE INSTALLATIVO / INSTALLATION LOCATION

Interno ed esterno | Indoor and outdoor

**VEGA S - SINGLE EMISSION** 24VDC version: **2W** 230VAC version: **2W** kg 0,43**VEGA S - DOUBLE EMISSION** 24VDC version: **↓2 + 2↑W** 230VAC version: **↓2 + 2↑W** kg 0,42**VEGA M - SINGLE EMISSION** 24VDC version: **6W** 230VAC version: **6W** RGBW-TW version: **4-8W** kg 0,59**VEGA M - DOUBLE EMISSION** 24VDC version: **↓6 + 6↑W** 230VAC version: **↓3 + 3↑W** RGBW-TW version: **8-16W** kg 0,58

CARATTERISTICHE ELETTRICHE | ELECTRICAL FEATURES

	<i>S - Single em. version</i>	2W
	<i>S - Double em. version</i>	2 x 2W
	<i>M - Single em. version</i>	6W
POTENZA ASSORBITA POWER CONSUMPTION	<i>M - Single em. version</i>	TW- RGBW 4-8W
	<i>M - Double em. version</i>	24Vdc 2 x 6W
	<i>M - Double em. version</i>	230Vac 2 x 3W
	<i>M - Double em. version</i>	TW- RGBW 8-16W

ALIMENTAZIONE | POWER SUPPLY

Standard versions: **24Vdc - 230Vac**
 RGBW-TW version: **C.C.**

ALIMENTATORE | POWER SUPPLY UNIT

24Vdc Non incluso | Not included } S, M single/double emission version
230Vac Integrato | Integrated }

4W - 350mA Con centralina non inclusa | Controller not included } M RGBW-TW single emission version
8W - 700mA Con centralina non inclusa | Controller not included }
8W - 350mA Con centralina non inclusa | Controller not included } M RGBW-TW double emission version
16W - 700mA Con centralina non inclusa | Controller not included }

DIMMERAZIONE | DIMMING

Dimmerabile Push, DMX, DALI, 1-10V, taglio di fase (escluse versioni 230Vac e RGBW-TW)

Push, DMX, DALI, 1-10V, phase cut dimmable (except 230Vac and RGBW-TW versions)

COLLEGAMENTO | CONNECTION

C.C. - *Serie | Series*
 24Vdc - **Parallelo | Parallel**
 230Vac - **Tensione di rete | Mains voltage**

CARATTERISTICHE ILLUMINOTECNICHE | LIGHTING FEATURES

COLORE LED | LED COLOUR

S version: **2700K, 3000K, 4000K, 5000K, Red, Green Blue**
 M single emission version: **Amber, 2200K, 2700K, 3000K, 4000K, Red, Green, Blue**
 M double emission version in 24Vdc: **Amber, 2200K, 2700K, 3000K, 4000K, Red, Green, Blue**

M double emission version in 230Vcc: **2700K, 3000K, 4000K, Red, Green, Blue**
 M version in C.C.: **Amber, 2200K, 2700K, 3000K, 4000K, Red, Green, Blue**

>90 (2700K, 3000K, 4000K, 5000K)

OTTICHE | OPTICS

S version: **10°, 36°, 60°**
 M version: **8°, 30°, 16°, 40°, 64°, B. Light**
 M version RGBW-TW: **30°, 40°, 64°**

FLUSSO TOTALE NOMINALE
TOTAL NOMINAL LUMENS

	(2700K)	(3000K)	(4000K)
S single:	146lm	155lm	172lm
S double:	↓146+146↑lm	↓155+155↑lm	↓172+172↑lm
M single:	560lm	600lm	640lm
M double 24Vdc:	↓560+560↑lm	↓600+600↑lm	↓640+640↑lm
M double 230Vac:	↓198+198↑lm	↓210+210↑lm	↓232+232↑lm

DURATA MEDIA LED | AVERAGE LED LIFE

50.000h L80 B10

CARATTERISTICHE MECCANICHE | MECHANICAL FEATURES

PESO | WEIGHT

S single: **kg 0,43**
 S double: **kg 0,42**
 M single: **kg 0,59**
 M double: **kg 0,58**

FINITURE | FINISHES

Bianco txt, Grigio txt, Nero txt, Corten, Antracite txt, Verde
T xt White, txt Grey, txt Black, Corten, txt Anthracite, Green

INSTALLAZIONE | INSTALLATION

A parete con basetta di fissaggio e grani (inclusi)
Wall mounting with mounted base and set screws (included)

MATERIALE | MATERIAL

Corpo in alluminio anticorodal, lente in PMMA e vetro
Anticorodal aluminium body, PMMA lens and glass

VEGA

CARATTERISTICHE GENERALI | GENERAL FEATURES

TEMPERATURA DI ESERCIZIO OPERATING TEMPERATURE	-10°C +45°C
GRADO DI PROTEZIONE INGRESS PROTECTION	IP65
GRADO DI RESISTENZA IMPACT RESISTANCE	IK07
GLOW WIRE TEST GLOW WIRE TEST	960°C.
TEMPERATURA SCHERMO SCREEN TEMPERATURE	40° @ Ta = 25°
CLASSE DI ISOLAMENTO APPLIANCE CLASS	I (230Vac version) - III (24Vdc and RGBW-TW versions)
CALPESTABILE WALKOVER	/
CARRABILE DRIVE OVER	/
CAVI DI ALIMENTAZIONE POWER CABLES	Fornito con 25cm di cavo Provided with 25cm cable
SICUREZZA STANDARD STANDARD SAFETY	/
SICUREZZA FOTOBIOLOGICA PHOTOBIOLOGICAL SAFETY	GR1

VEGA

CODICE / CODE	BA001
TIPOLOGIA / TYPOLOGY	Distanziale Spacer  kg 0,06
MATERIALE / MATERIAL	Alluminio Aluminium

